



ALK[®]

AL KHUSHBU[®]

Afifa

VOL-2



Back
Work





ALK

AL KHUSHBU









ALK

AL KHUSHBU



AL KHUSHBU

TOP
BOTTOM
DUPAT

SIZE M
L
XL





ALK

AL KHUSHBU



Afifa

VOL-2



ALK-6015



ALK-6016



ALK-6017



ALK-6017

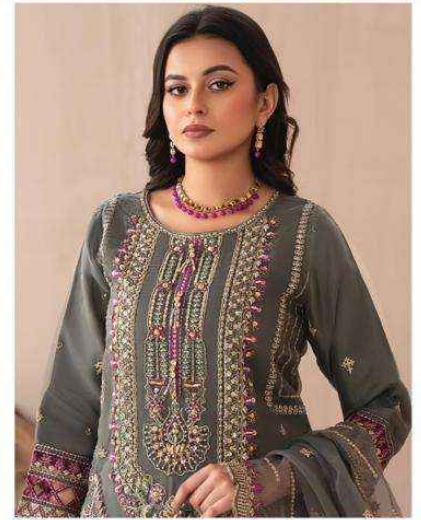
TOP Fox Georgette with Heavy Embroidery (cut 2.50)

BOTTOM-INNER Dull Santoon (cut 4.25)

DUPATTA Fox Georgette with Heavy Embroidery (cut 2.40)

CARE INSTRUCTIONS

- ☉ Dry clean only.
- ⚠ Do not use any bleach or stain removing chemical.
- ☐ Iron the fabric at moderate temperature.
- ☒ Do not dry fabric in direct sunlight.



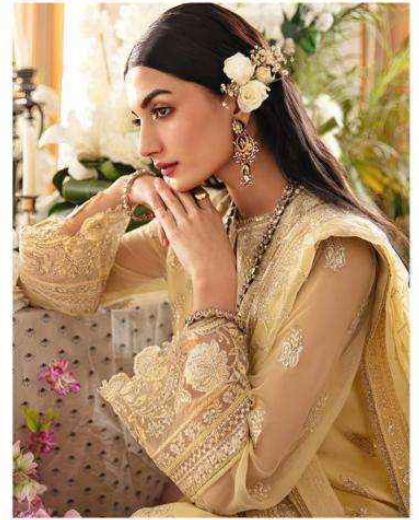
ALK[®]
AL KHUSHBU[®]

ALK-6016

- TOP** Fox Georgette with Heavy Embroidery (cut 2.50)
- BOTTOM-INNER** Dull Santoon (cut 4.25)
- DUPATTA** Fox Georgette with Heavy Embroidery (cut 2.40)

CARE INSTRUCTIONS

- ☉ Dry clean only.
- ⚠ Do not use any bleach or stain removing chemical.
- ☐ Iron the fabric at moderate temperature.
- ☒ Do not dry fabric in direct sunlight.



ALK[®]
AL KHUSHBU[®]

ALK-6015

- TOP** Fox Georgette with Heavy Embroidery (cut 2.50)
- BOTTOM-INNER** Dull Santoon (cut 4.25)
- DUPATTA** Fox Georgette with Heavy Embroidery (cut 2.40)

CARE INSTRUCTIONS

- ☉ Dry clean only.
- ⚠ Do not use any bleach or stain removing chemical.
- ☐ Iron the fabric at moderate temperature.
- ☒ Do not dry fabric in direct sunlight.



ALK[®]

AL KHUSHBU[®]

Afifa

VOL-2

Afifa

VOL-2



ALK-6015



ALK-6016



ALK-6017