



RUPALI<sup>TM</sup>  
FASHION TRENDS

# GRACHE





# GRACHE

---

## DESIGN

---

---

## DESCRIPTION

---

2201

### TOP

JAAM SATIN DYIENG WITH HEAVY  
EMBROIDERY STICHED

2202

2203

### DUPATTA

PURE BEMBERG DUPATA DIGITALLY PRINTED

2204

2205

### BOTTOM

JAAM SATIN HEAVY DYIENG

2206

---

**TOTAL PIECES:- 6**

---



**RUPALI**  
FASHION TRENDS



-2201-



-2202-



-2203-



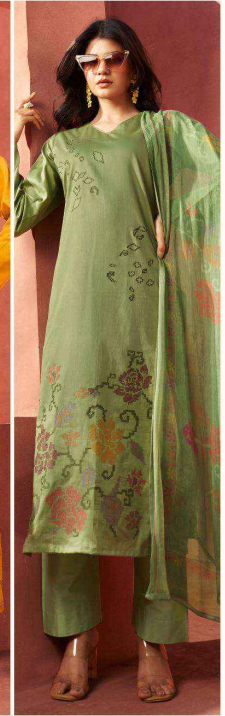
**GRACHE**



-2204-



-2205-



-2206-





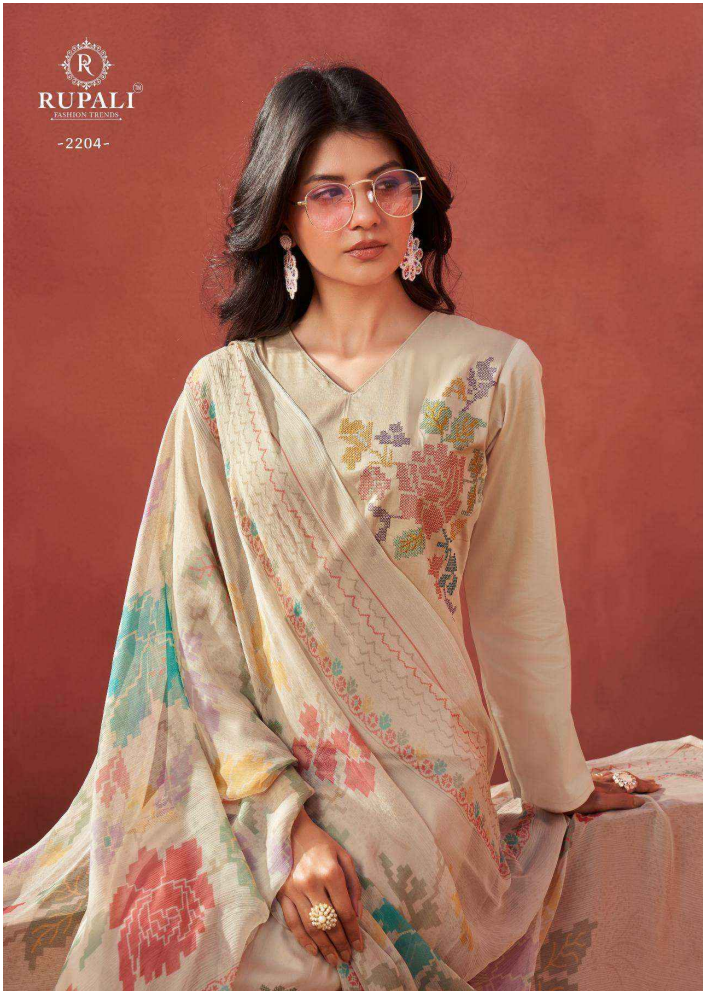
Glamorous



girl

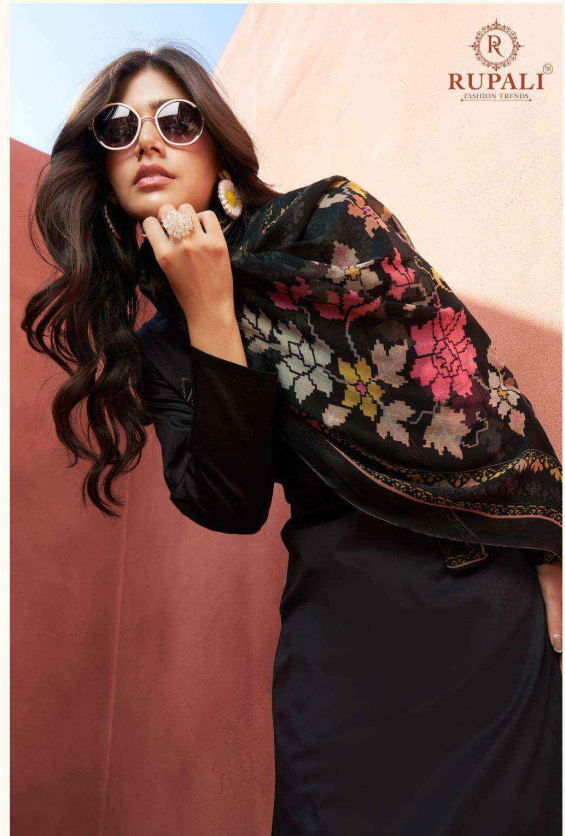
  
**RUPALI**  
FASHION TRENDS  
-2205-







-2203-





**RUPALI**  
FASHION TRENDS



-2203-







  
**RUPALI**<sup>®</sup>  
FASHION TRENDS

-2202-

*Glamorous*



*girl*

Glamorous

girl



-2201-





RUPALI<sup>TM</sup>  
FASHION TRENDS

# GRACHE

