

A woman with long dark hair is smiling and looking towards the camera. She is wearing a long-sleeved, knee-length outfit in shades of teal and beige. The outfit features intricate floral and geometric patterns. She is also wearing a matching teal and beige shawl with a wide border. Her accessories include a pearl necklace, a teal beaded necklace, and a pearl bracelet. The background is a soft-focus outdoor setting with greenery.

Alzohaib

RUAAB
VOL-1



AZ-1210

AZ-1211



AZ-1248

AZ-1249

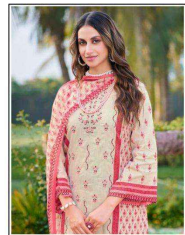
AZ-1250

Alzohaib



Alzohaib
AZ-1210
COTTON GARMENTS

Alzohaib



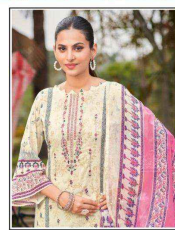
Alzohaib

AZ-1250
COTTON DUPATTA

Alzohaib



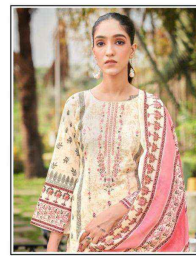
Alzohaib



Alzohaib

AZ-1248
COTTON DURRATA

Alzohaib



Alzohaib

AZ-1249
COTTON DURKHA



 **Alzohaib**
AZ-1210
COTTON DUPATTA



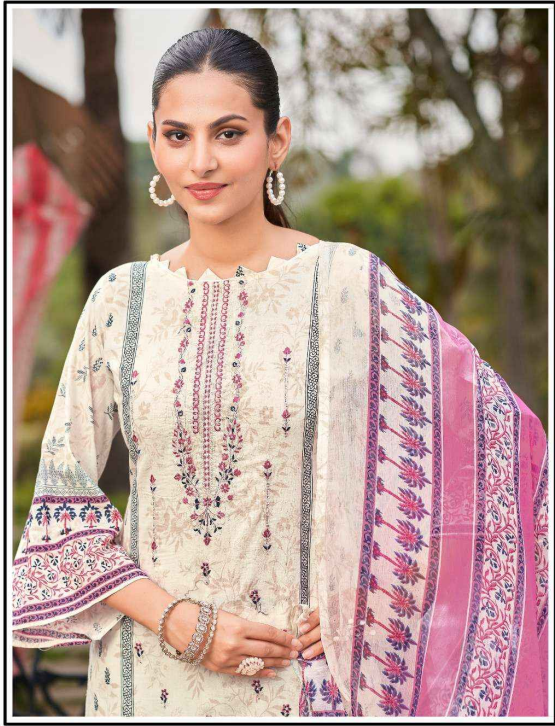
 **Alzohaib**
AZ-1211
COTTON DUPATTA



 Alzohaib™

AZ-1250
COTTON DUPATTA





 Alzohaib™

AZ-1248

COTTON DUPATTA





 Alzohaib™

AZ-1249
COTTON DUPATTA



A woman with long dark hair is smiling and looking towards the camera. She is wearing a long-sleeved, knee-length outfit in shades of teal and beige. The outfit features intricate floral and geometric patterns. She is also wearing a matching teal and beige shawl with a wide border. Her accessories include a pearl necklace, a teal beaded necklace, and a pearl bracelet. The background is a soft-focus outdoor setting with greenery.

Alzohaib

RUAAB
VOL-1



AZ-1210

AZ-1211



AZ-1248

AZ-1249

AZ-1250