



VARSHA
ERU



VARSHA
ECRU



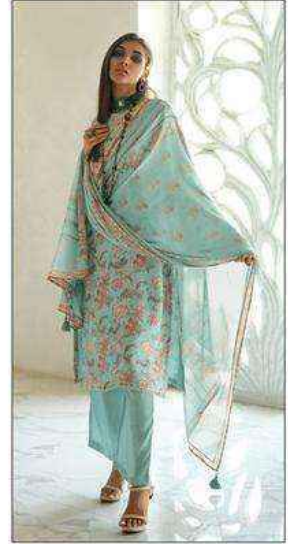
ECRU-01



ECRU-02



ECRU-03



ECRU-04

A woman with dark hair is standing in front of a highly ornate, white, classical-style wall. She is wearing a long-sleeved, knee-length dress with a vibrant yellow and floral pattern, and a matching yellow shawl draped over her left shoulder. She is also wearing white sandals. The wall behind her features a large, arched central relief with intricate floral and scrollwork designs. The floor is made of light-colored, polished tiles. The overall aesthetic is elegant and sophisticated.

VARSHA
ERU



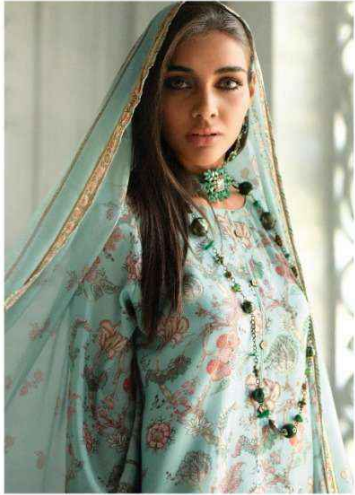
ECRU-01



ECRU-02



ECRU-03



VARSHA
ECRU



DESIGN	PRICE	DESCRIPTION
ECRU-01	1980	•TOP• PASHMINA SILK DIGITALLY PRINTED WITH LACES
ECRU-02	1980	•BOTTOM• PASHMINA SILK SOLID
ECRU-03	1980	•DUPATTA• PASHMINA SILK DIGITALLY PRINTED
ECRU-04	1980	

TOTAL AMOUNT :7,920/-+GST

TOTAL PIECES : 4

FROM VARSHA FASHION

